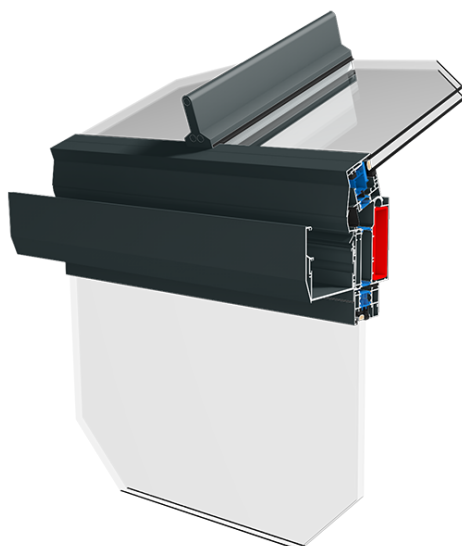


Facades / Winter gardens » Winter gardens » SYSTEM MB-WG60



Winter gardens MB-WG 60

The modern aluminum system enables to create winter gardens, hothouses and verandas that stand out for maximum access to daylight and high energy efficiency.

Features

1. The possibility to build very sophisticated and various arrangements, roof structures and terrace spaces.
2. Modern and aesthetic structure with an integrated system for draining rain water.
3. Freedom in choice of colors and glazing types.
4. Durable and resistant structure for years thanks to the application of high-quality aluminum profiles.
5. Usage comfort ensured by access to a lot of daylight.
6. Individually devised garden structure, made of aluminum resistant to adverse weather conditions that ensures high stability and long-lasting durability.
7. The possibility to equip windows in the winter garden with a smart control system with a remote control, a tablet or a smartphone.
8. The possibility to apply various glass combinations: safe glass, anti-burglary, ornament, hardened etc.
9. Complete water and wind tightness by the application of continuous EPDM membranes that also cut off cold external air from the internal aluminum profiles.
10. The system is equipped with the optimum drainage and ventilation systems.
11. The system profiles adopt next-generation special chamber separators so that they increase thermal insulation and resistance of winter gardens.

Technical data

Colour range	According to the RAL color range and wood-grain coating from Aluprof ColorCollection
Gaskets	Membrane EPDM seal.
Glass	The possibility to apply glass with enhanced sound insulation, tempered, safety, anti-burglary, ornament, solar protective
Spacer frame	Steel galvanized frame in standard. Optionally Swisspacer Ultimate available in various colour options.
Profile	Aluminium profile with a thermal separator, compatible with other window systems made of i.a. PCV, aluminum and wood.